



Sponsorship Information

Our Team



Members

- 50+ active members
- Freshmen to PhD students
- All majors and skill levels welcome
- Nearly 20 person increase in membership between 2017 and 2018

History

6 Challenge Cars

2 Overall Wins

16 GRM \$2000 Challenges (\$2003-\$2018)

In the scope of its 16 year history, Wreck Racing has completed six competition cars:

- 1984 VW GTI
- 1985 BMW 325e
- 1992 Mazda Miata
- 969 MG Midget
- 2001 Honda Insight
- 1986 BMW 528e (current challenge car)

The term 'Wreck' became a part of Georgia Tech history in 1914 in the form of a Ford Model T. Initially, it referred to cars and contraptions, as well as the various Georgia Tech sports teams; however, students and alumni are now referred to as 'Wrecks.'



The Mission



To design and build production-based racecars to compete in local and national events.

The Challenge

Wreck's primary competition is the Grassroots Motorsports \$2000 Challenge.

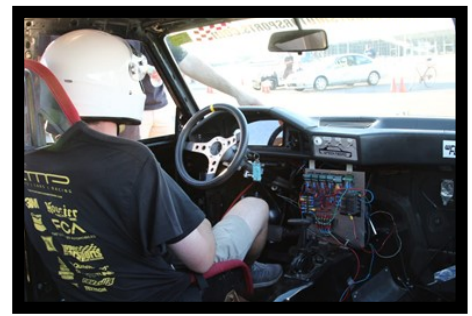
- Annual competition in Gainesville, Florida
- 3 events: Drag Race, Autocross, Concours
- \$2000 Budget Restriction
- The goal is to build a vehicle that can perform well in all areas.
- The team works on cars for three year rotations, working to improve the design and performance between each competition.

The Strategy

- The team couples hands-on engineering experience with knowledge learned in the classroom in order to use real-world engineering strategies on the designs. Some examples are the use of:
 - CAD and Finite Element Analysis
 - Welding, Milling, and other advanced Fabrication Techniques
 - Signal Processing, Circuit Design, and More!

The Reward

- Members are able to build invaluable relationships with advisors and corporate sponsors often leading to life-long careers.
- Members have the opportunity to pursue their passion of building and driving competition cars and attending various motorsports events.



GRM \$2018-\$2020



A 1986 BMW E28 designed to achieve an 11 second 1/4 mile time.

Tech Specs:

- Chassis: 1986 BMW E28
- Engine: 5.3 Liter Gen-III Small Block Chevy
- Suspension: MacPherson Strut from E36 BMW (front), Custom 3-Link Solid axle (rear)
- Curb Weight: ~2469 lbs
- Est. Horsepower: ~310 hp
- Est. Torque: ~315 ft-lbs
- TH400 3-Speed Automatic Transmission

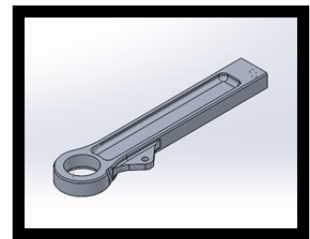
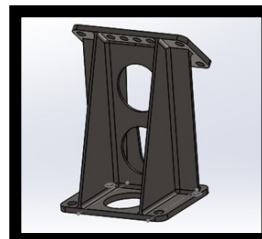
\$2018 Performance:

- Second overall
- “Best Engineered” Car
- 1st place Concours
- 3rd place Morning Autocross



The Design

- A variety of tools and fabrication techniques were used to prepare several of the car's components including:
 - Custom control arms
 - Modified Ford 8.8 solid rear axle
 - Custom motor mounts
 - Custom switch panel



Future Plans

- Turbo routing
- Improving transmission
- Fabrication of more parts to reduce budget
- Addressing weight distribution and brake bias





What's the Good Word?

No matter what venue, the Wreck Racing competition cars are sure to turn heads. Our arrival at any automotive or non-automotive event always creates a stir of excitement from those in attendance, and we are regularly featured on racing websites and blogs. Any publicity we receive is invaluable to any racing club, track, or tuning shop looking to reach the racing demographic. We would like to ask for your support as we continue to strive for success both on and off the track. Thank you for your consideration.



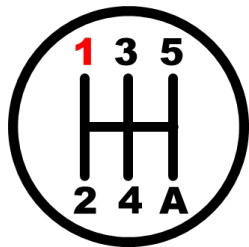
Check Us Out!

Check us out on our website and social media to see what Wreck Racing is up to!

- Facebook: WreckRacing
- LinkedIn: www.linkedin.com/company/wreck-racing
- Instagram: @wreckracing
- Website: www.wreckracing.gatech.edu

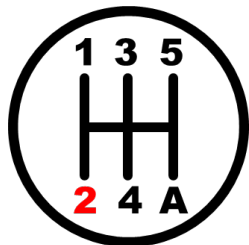


Levels of Contribution



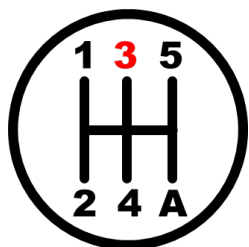
1st Gear - \$250

- 16 in² logo on car
- Website advertisement



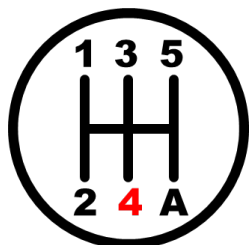
2nd Gear - \$500

- 32 in² logo on car
- Logo on trailer & t-shirt
- Website advertisement



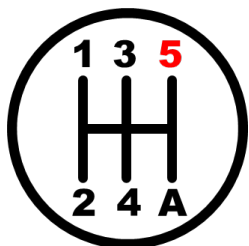
3rd Gear - \$1,000

- 64 in² logo on car
- Logo on trailer, t-shirt, & team banner
- Website advertisement



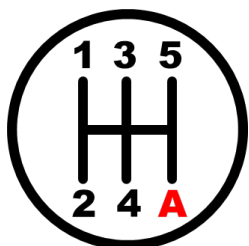
4th Gear - \$2,500

- 100 in² logo on car
- Logo on trailer, t-shirt, & team banner
- Website advertisement
- Access to team member's resumes



5th Gear - \$5,000+

- 150 in² logo on car
- Logo on trailer, t-shirt, & team banner
- Website advertisement
- Access to team member's resumes



Alternative

Sponsorship can also be in the form of tools, equipment, food, merchandise, or other forms of aid. Such forms of sponsorship will be considered as their market value in cash with respect to the sponsorship tiers.

Start Your Engines!



By supporting Wreck Racing, your company can receive exposure from:

- National and regional automotive shows and events (Petit Le Mans, The Mitty at Road Atlanta, Caffeine and Octane, Performance Racing Industry Trade Show)
- Team Website, Cars, Shirts, Banners
- Event Media Coverage
- Blog and Magazine Features (Grassroots Motorsports, Speedhunters, etc.)



Your company will also...

- Gain easy access to a network of some of Georgia Tech's brightest and most dedicated students.
- Be part of a memorable advertising platform.
- Invest in a team of passionate and skilled students that could be the future of your company.

Contact Information



Website www.wreckracing.gatech.edu

Mailing Address **Wreck Racing
Georgia Tech
350 Ferst Drive
Student Center Commons Rm. 2211
Atlanta, GA 30332-0285**

Sponsorship Chair **Ben Engleman
Phone: 404-915-1970
E-mail: bengleman2@gatech.edu**

President **Lawson Sumner
Phone: 706-766-6871
E-mail: lsumner@gatech.edu**

Lead Engineer **Matthew Foster
Phone: 770-500-0813
E-mail: mfoster44@gatech.edu**

Faculty Advisor **Caroline L. Genzale, PhD
Email: caroline.genzale@me.gatech.edu**

More Information **For more information about Wreck Racing, please contact any of the individuals above. We also encourage you to visit the Student Competition Center to check out our current projects. Tours are available during business hours, during our weekly work nights (Tuesdays and Thursday nights beginning at 7), and on weekends.**